

BEE SCHOOL

Hosted by:

The Appalachian Beekeepers Association of Rowan County, Kentucky

Saturday, February 22, 2025 --- 8:00am-4:00pm

Registration opens at 8:00am --- First session begins at 9:00am

On the campus of Maysville Community and Technical College

1755 US68, Maysville, KY 41056

Cost is \$20 per family

A full day of informative and instructional events from several well-known guest speakers who have over 100+ years of experience in beekeeping including:

*Jake Beeman

*Jim Coss

*Gabe Blatt

*Larry Young

*JJ Barker

*Tim Sheehan

*Scott Moore

*Amanda Skidmore (Ky State Apiarist)

*Chris West

*Chris Palmer

*Craig Sheehan

*Robert Baker

*Jessica Mayes

*Charlie Charles



Topics discussed include:

*New to Beekeeping?

*Nucs vs Packaged Bees

*Marketing Products

*Swarm Control

*Beekeeping in Education

*Honey Production

*Treating EFB

*Hive Winter Preparation

*Mite Treatments

*Other Pest Control Measures

Vendors will be set up offering deals on a wide variety of products, taking orders for bees, and lots of giveaways and door prizes.

For more information contact:

Tim Black 606-548-1433

Paula Coss 502-604-0210

Jim Coss 606-207-7785



The Appalachian Beekeepers Association of Rowan County is non-profit organization located in Rowan County, Kentucky. The association hosts monthly meetings the first Wednesday of every month at 6:00pm inside the Richardson Horse Show Arena located on the Morehead State University Farm just off KY377. The group is open to all applicants wishing to join and learn more about honeybees and beekeeping.

Event schedule (subject to change)

8:00am – Registration Opens (remains open till 12:00pm)

9:00am – Opening session w/ Keynote speaker Jake Beeman
- Identifying and Treating EFB

10:00am – 10:45am Small group breakout sessions #1

Session 1A - Jim Coss - NUCS & Packaged Bees

Session 1B – Gabe Blatt - Mite Treatments

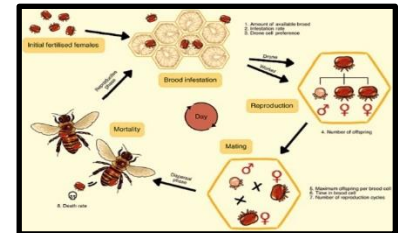
Session 1C – Larry Young - Honey Production

Session 1D – JJ Barker - Do's & Don'ts for New Beekeepers

Session 1E – Robert Baker - Hive Components



Jake Beeman



11:00am – 11:45am Small group breakout sessions #2

Session 2A – Chris West - New Beekeepers

Session 2B – Chris Palmer - Mite Treatments

Session 2C – Tim Sheehan - Swarm Control (KY State Beekeepers Association)

Session 2D – Craig Sheehan – Winter Hive Protection (KY State Beekeepers Association)

Session 2E – Scott Moore & Jessica Mayes (KY State Beekeepers Association)

- Marketing of Honey and other Bee Products



12:00pm – 1:00pm Lunch Break (On Your Own)

1:00pm – Mid-Day session w/ Keynote speaker Amanda Skidmore (Ky State Apiarist)

- New Beekeepers and Latest News & Trends

2:00pm – Small group breakout sessions #3

Session 3A - Jim Coss - NUCS & Packaged Bees

Session 3B – Gabe Blatt - Mite Treatments

Session 3C – Larry Young - Honey Production

Session 3D – Robert Baker - Hive Components

Session 3E – JJ Barker - Do's & Don'ts for New Beekeepers



3:00pm - Small group breakout sessions #4

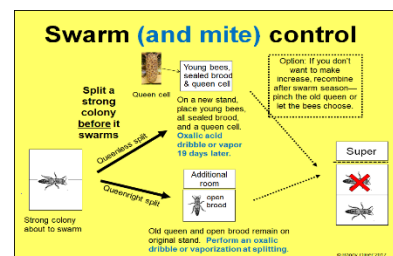
Session 4A – Chris West - New Beekeepers

Session 4B – Chris Palmer - Mite Treatments

Session 4C – Tim Sheehan – Swarm Control

Session 4D – Winter Hive Protection

Session 4E – Scott Moore & Jessica Mayes - Marketing of Honey & other Bee Products



3:45pm – Closing session w/ CTE teacher Charlie Charles (Beekeeping in Education)

4:00pm – Door prize drawings

